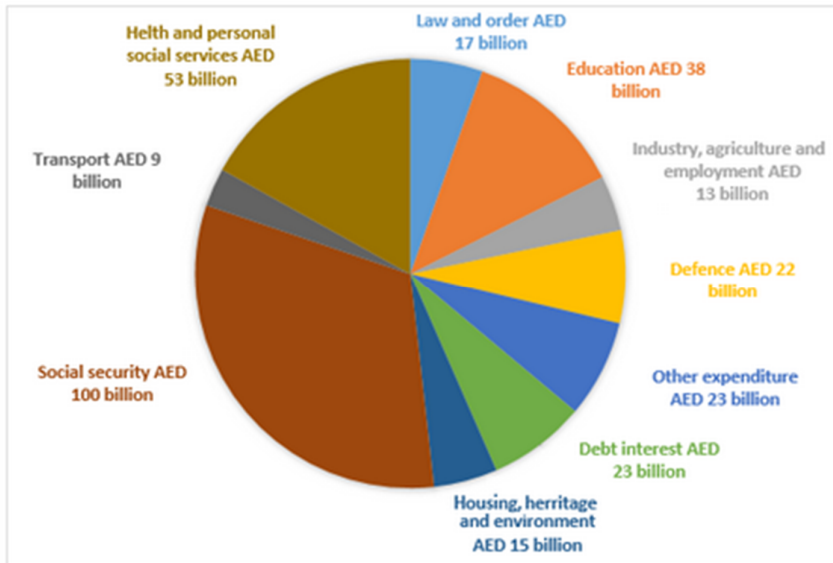




تسک 1 آکادمیک (You should write at least 150 words)

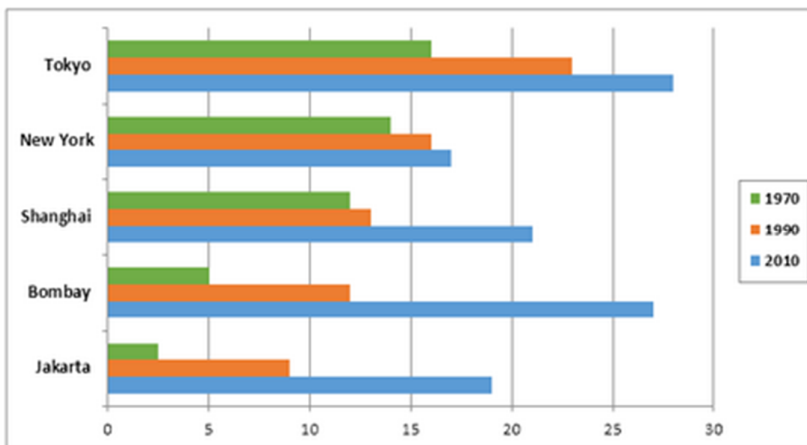
- 1. The chart below shows how much money is spent in the budget on different sectors by the UAE government in 2000.**

Summarize the information by selecting and reporting the main features, and make comparisons where relevant.



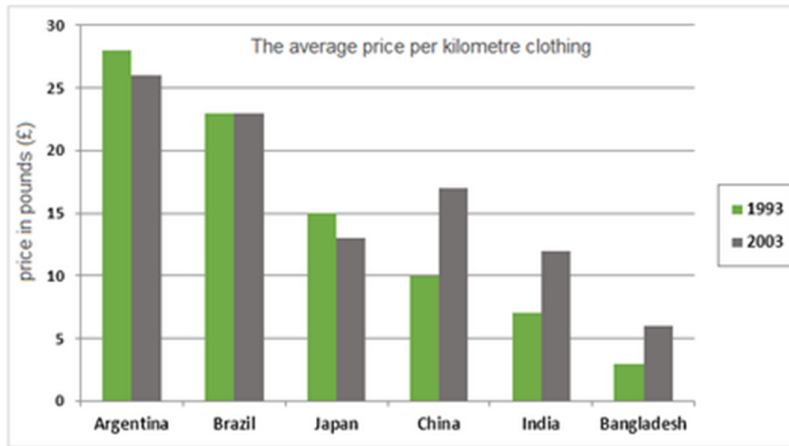
2. The charts below show the growth in the population in some of the world's largest cities as well as the population distribution in urban and rural areas.

Summarize the information by selecting and reporting the main features, and make comparisons where relevant.



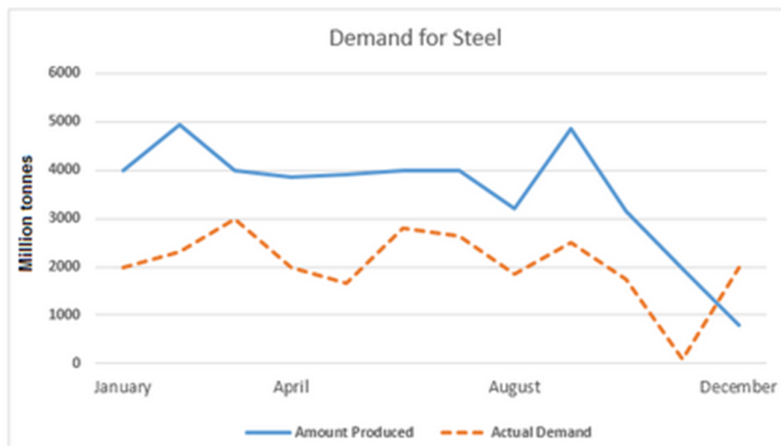
3. The average prices per kilometre of clothing imported into the European Union from six different countries in 1993 and 2003 are shown in the bar chart below.

Summarize the information by selecting and reporting the main features, and make comparisons where relevant.



4. The line graphs below show the production and demand for steel in million tonnes and the number of workers employed in the steel industry in the UK in 2010.

Summarize the information by selecting and reporting the main features, and make comparisons where relevant.



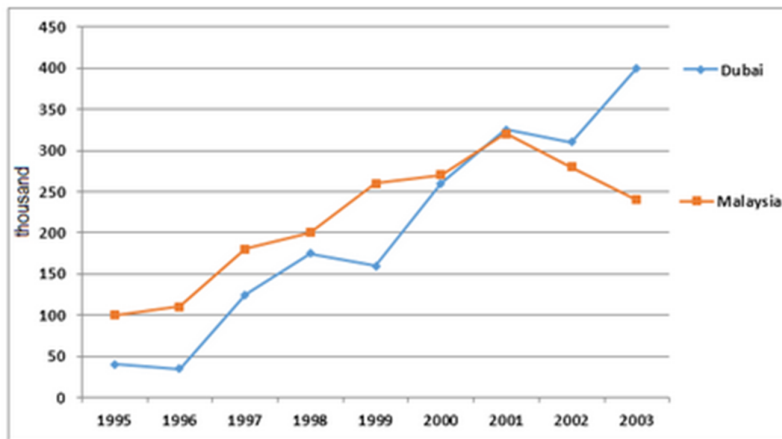
5. The pie charts below show the online sales for retail sectors in New Zealand in 2003 and 2013.

Summarise the information by selecting and reporting the main features, and make comparisons where relevant.



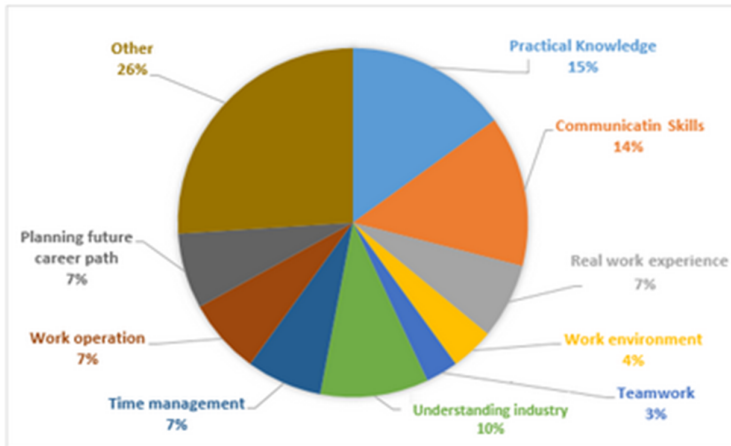
6. The number of tourists visiting Malaysia and Dubai from 1995 to 2003 is presented below.

Write a report for a university lecturer describing the information shown in the diagrams below.



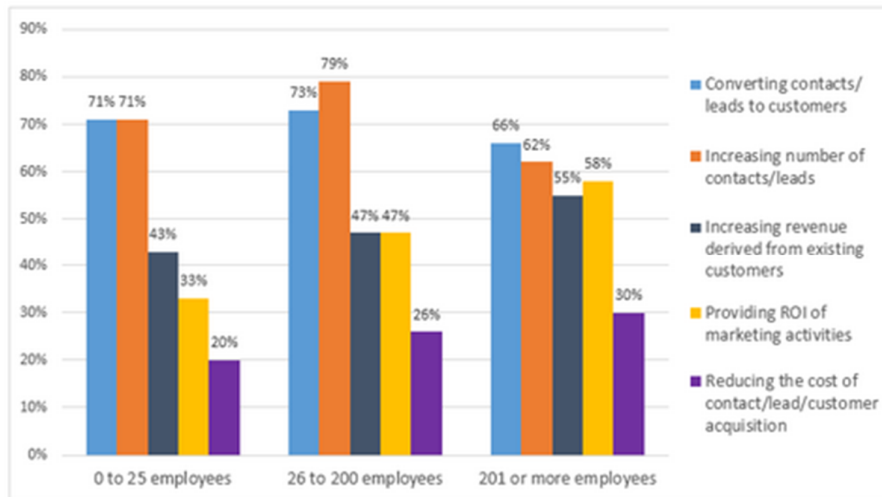
7. The graph below shows a survey result of 4000 participants who expressed what important aspects they have learned from the internship they have completed.

Summarise the information by selecting and reporting the main features and make comparisons where relevant.



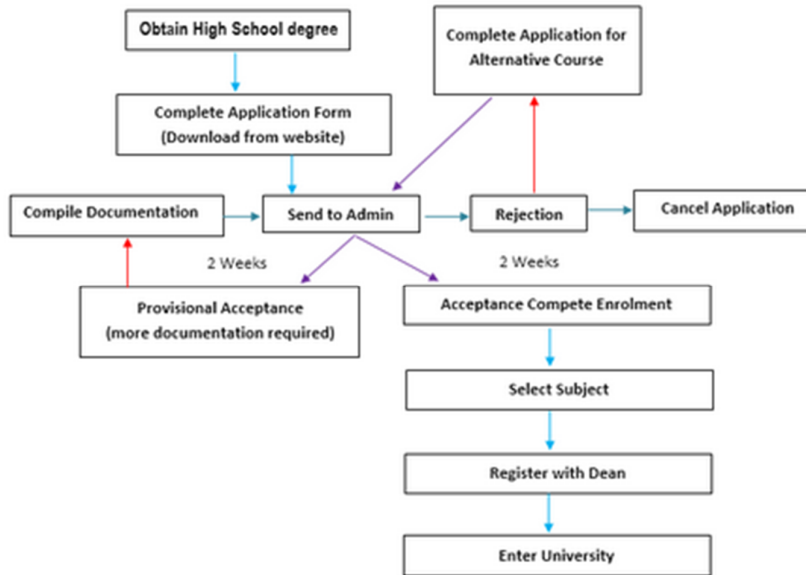
8. The graph below shows the top priorities by business companies in the USA in 2016.

Summarise the information by selecting and reporting the main features and make comparisons where relevant.



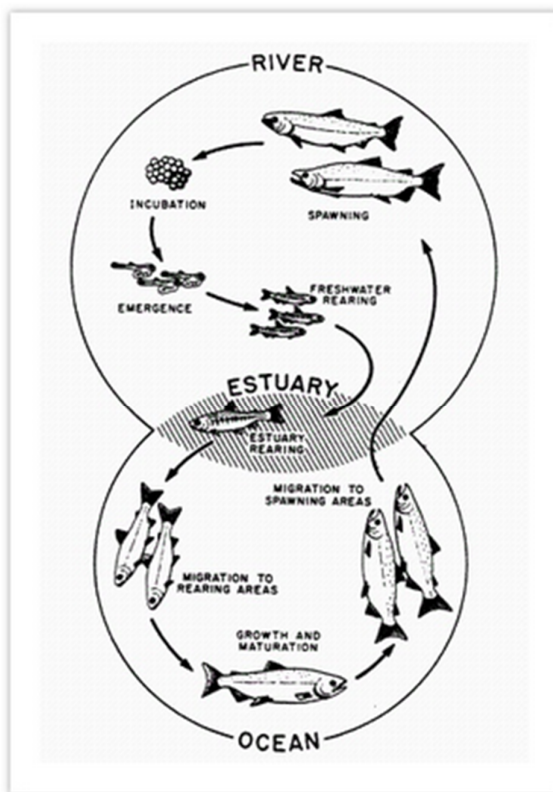
9. The diagram shows the procedure for university entry for high school graduates.

Summarise the information by selecting and reporting the main features, and make comparisons where relevant.



10. The diagram below shows the life cycle of a salmon, from egg to adult fish.

Summarise the information by selecting and reporting the main features and make comparisons where relevant.



11. The table below shows the worldwide market share of the notebook computer market for manufacturers in the years 2006, 2007 and 2014.

Summarise the information by selecting and reporting the main features and make comparisons where relevant.

Company	2006 (% Market Share)	2007 (% Market Share)	2014(% of Market Share)
HP	31.4	34	34.25
Dell	16.6	20.2	26.12
Samsung	11.6	10.7	14.20
Toshiba	6.2	7.3	8.12
Lenovo	6.6	6.2	7.10
Fujitsu	4.8	2.3	3.1
Others	22.8	19.3	7.11
Total	100	100	100